

MATEMATIKA 3: Trajanje 120 minuta. Zabranjen je razgovor sa drugim studentima. Na klupama je dozvoljen samo pišaći pribor, tablica osnovnih integrala, tablica Laplaceovih transformacija, kalkulator, indeks ili iksica i prazni papiri koji nose ime studenta. Sav ostali pribor, formule, uređaji, bilješke i nepotpisane prazne papire zabranjeno je koristiti i trebaju ostati u torbi ili pohranjeni kod nastavnika (elektronički uređaji trebaju biti isključeni) tokom cijelog trajanja ispita. Studenti koji primijete zabranjene predmete dužni su ih prijaviti nastavniku. Nije dozvoljeno međusobno posuđivanje pribora tijekom trajanja ispita. Povreda ovih pravila može za posljedicu imati udaljavanje s ispita. ZADATKE RIJEŠAVATE JEDNOSTRANO NA PAPIRE KOJE DOBIJETE OD NASTAVNIKA.

oxo

~~10~~
10

IME I PREZIME:

Marin Matešić

BROJ INDEKSA: 54489 - 2007

1. Izračunati dvostruki integral:

$$\iint_S y \, dx \, dy,$$

gdje je S područje donje poluravnine ($y \leq 0$) omeđeno kružnicom $(x+1)^2 + y^2 = 4$.

2. Izračunati $\int_{\widehat{ABC}} z \, dx + y \, dy + x \, dz$ gdje je \widehat{ABC} krivulja koja ide bridovima trokuta s vrhovima $A(1, 0, 0)$, $B(0, 1, 0)$, $C(0, 0, 0)$ usmjerena redom od vrha A preko B i C do ponovo vrha A . Koristiti Stokesovu formulu.

3. Izračunati volumen tijela omeđenog valjkom $x^2 + z^2 = 4$ i ravninama $4 + 2z = y$ i $y = 0$.

4. Izračunati

$$\int_{(0,0,0)}^{(1,\pi,\pi)} x \, dx + z^2 \cos y \, dy + 2z \sin y \, dz$$

5. Koristeći Laplaceovu transformaciju riješiti diferencijalnu jednačbu: n

$$x'''(t) - x''(t) = e^t, \quad x'(0) = x''(0) = 1, \quad x(0) = -1.$$

10

5. $x'''(t) - x''(t) = e^t$

$$x'(0) = 1$$

$$x''(0) = 1$$

$$x(0) = -1$$

VIDI PERKOVIĆ
MILKOJA
VLASTIĆ

$$s^3 F(s) - s^2 f'(0) - s f''(0) - f(0) - (s^2 F(s) - s f'(0) - f(0)) = \frac{1}{s-1}$$

$$s^3 F(s) - s^2 f'(0) - s f''(0) - f(0) - s^2 F(s) + s f'(0) + f(0) = \frac{1}{s-1}$$

$$s^3 F(s) + s^2 - s - 1 - s^2 F(s) - s + 1 = \frac{1}{s-1}$$

$$s^3 F(s) - s^2 F(s) = \frac{1}{s-1} + 2s - s^2$$

$$F(s) (s^3 - s^2) = \frac{1}{s-1} + 2s - s^2$$

$$F(s) = \frac{1 + 2s(s-1) - s^2(s-1)}{s-1} = \frac{1}{s^2 - s^2}$$

$$\frac{A}{s} + \frac{B}{s^2} + \frac{C+D}{s^2-1}$$

$$= \frac{1 + 2s^2 - 2s - s^3 - s^2}{s^2 - s^2 (s-1)}$$

$$= \frac{-s^3 + s^2 - 2s + 1}{s^2 (s-1) (s-1)}$$

$$-s^3 + s^2 - 2s + 1 = A s(s^2-1) + B(s^2-1) + Cs + D(s^2)$$

$$= As^3 - As + Bs^2 - B + Cs^3 + Ds^2$$

$$s^3 \quad -1 = A + C = C = -1 - A = \boxed{-3}$$

10

$$s^2 \quad 1 = B + D \Rightarrow D = 1 - B = \boxed{2}$$

$$s^1 \quad -2 = -A \Rightarrow A = \boxed{2}$$

$$s^0 \quad 1 = -B \Rightarrow B = \boxed{-1}$$

$$\frac{2}{s} + \frac{-1}{s^2} + \frac{-1}{s^2-1}$$

$$x = \boxed{2 - t - \sin t}$$

KADA OVO

UVRSTITE ~~U~~ U POLAZNJU

JEDNAČBU TREBA ROBITI $x''' - x'' = e^t$

I TAKOĐER

$$x(0) = -1, x'(0) = 1, x''(0) = 1$$

KOD VAS TO NIJE.

4.

(1, π, π)

$$\int_{(0,0,0)} x dx + 2^2 \cos y dy + 2z \sin y dz$$

~~0~~

$$W = \begin{bmatrix} x \\ 2^2 \cos y \\ 2z \sin y \end{bmatrix} = -\text{grad } f$$

3.

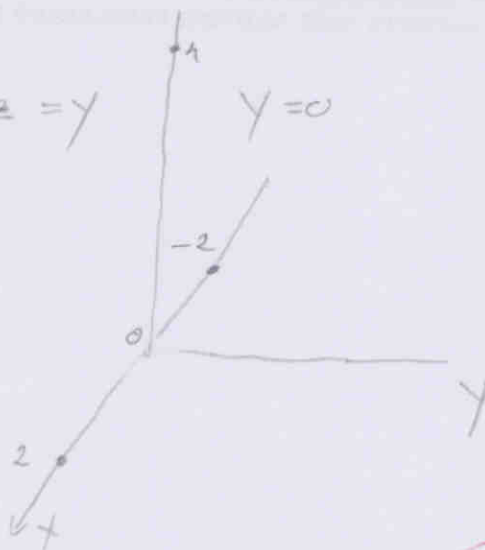
$$x^2 + z^2 = 4$$

$$z^2 = 4 - x^2$$

$$z = \sqrt{4 - x^2}$$

$$4 + 2z = y$$

$$y = 0$$



$$V = \int_0^{2\pi} \int_0^2 \int_4^{r \sin t} r dz dr dt \quad \times$$

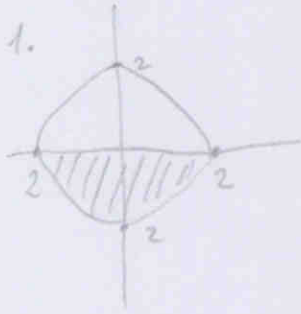
$$= \int_0^{2\pi} \int_0^2 r(r \sin t - 4) dr dt$$

$$= \int_0^{2\pi} \int_0^2 r^2 \sin t dr dt + \int_0^{2\pi} \int_0^2 -4r dr dt$$

$$= \int_0^{2\pi} \left. \frac{r^3}{3} \right|_0^2 \sin t dt + \int_0^{2\pi} \left. -2r^2 \right|_0^2 dt = \int_0^{2\pi} \frac{8}{3} \sin t dt + \int_0^{2\pi} 8 dt$$

$$= \frac{8}{3} (-\cos t) \Big|_0^{2\pi} + 8t \Big|_0^{2\pi} = \frac{8}{3} (-\cos 2\pi + \cos 0) + 8(2\pi - 0) = 16\pi = \underline{\underline{50,27}}$$

= 0



$$\iint y dx dy$$

$$x = \dots$$

$$y = \dots$$

$$z = \dots$$

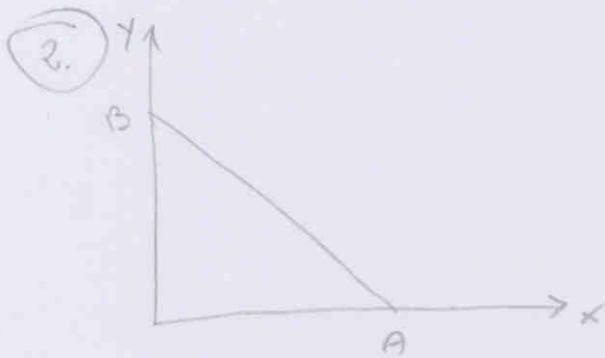
$$(x+1)^2 + y^2 = 4$$

$$x^2 - 2x + 1 + y^2 = 4$$

$$y^2 = -x + 2x + 3$$

$$y = \sqrt{-x + 2x + 3}$$

$$\int_0^2 \int_{-\sqrt{-x+2x+3}}^{\sqrt{-x+2x+3}} y dx dy =$$



$$AB = y - 0 = \frac{1-0}{0-2} (x-2)$$

$$y = -\frac{1}{2}x + 1$$

$$w = \begin{bmatrix} z \\ y \\ x \end{bmatrix}$$



$$x \in [0, 2] \quad y \in [0, -\frac{1}{2}x + 1]$$

$$\int_{ds} (w \cdot dr) = \iint_S (rot w) \cdot ds$$

$$rot w = \nabla \times w = \begin{bmatrix} \frac{dx}{dy} \\ \frac{dy}{dz} \\ \frac{dz}{dx} \end{bmatrix} \times \begin{bmatrix} 0 \\ y^2 \\ x^2 \end{bmatrix} = \begin{bmatrix} 0-0 \\ 0-2x \\ 0-0 \end{bmatrix} = \begin{bmatrix} 0 \\ -2x \\ 0 \end{bmatrix}$$

$$\Rightarrow \begin{bmatrix} 1 \\ 0 \\ 0 \end{bmatrix} \times \begin{bmatrix} 0 \\ 1 \\ 0 \end{bmatrix} = \begin{bmatrix} 0 \\ 0 \\ 1 \end{bmatrix}$$

$$r(x,y) = f(x,y,0)$$

$$\iint \begin{bmatrix} 0 \\ -2x \\ 0 \end{bmatrix} \cdot \begin{bmatrix} 0 \\ 0 \\ 1 \end{bmatrix} dx dy = \emptyset$$